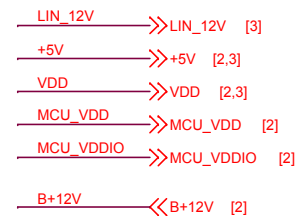
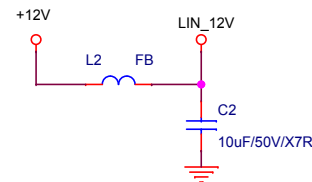
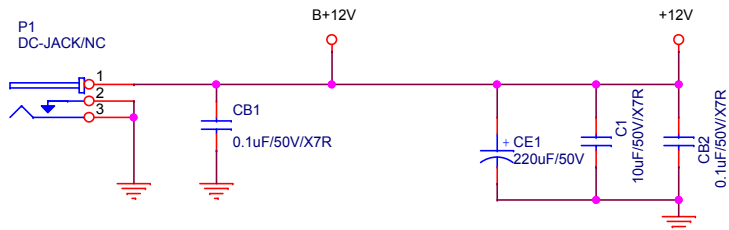
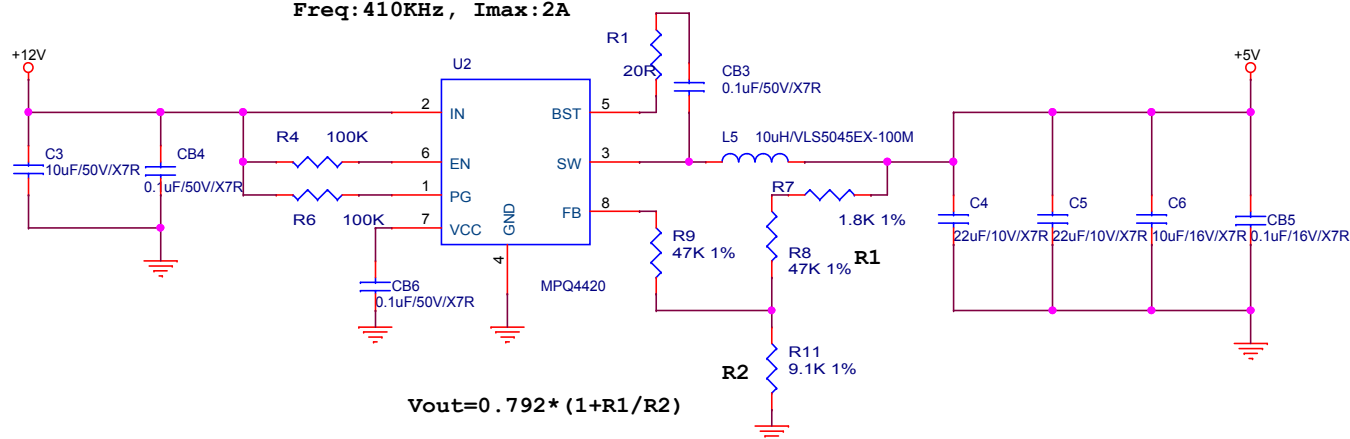


POWER INPUT

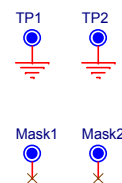
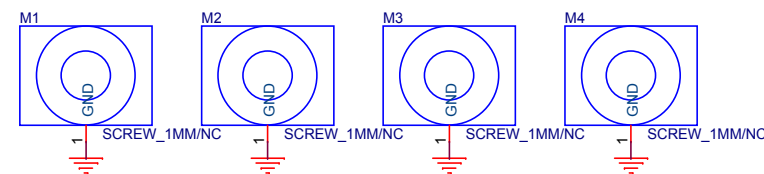
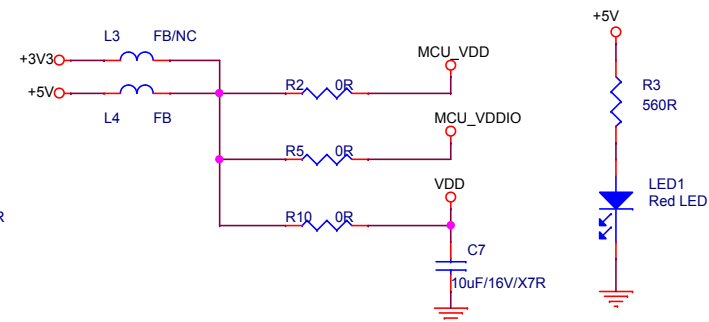
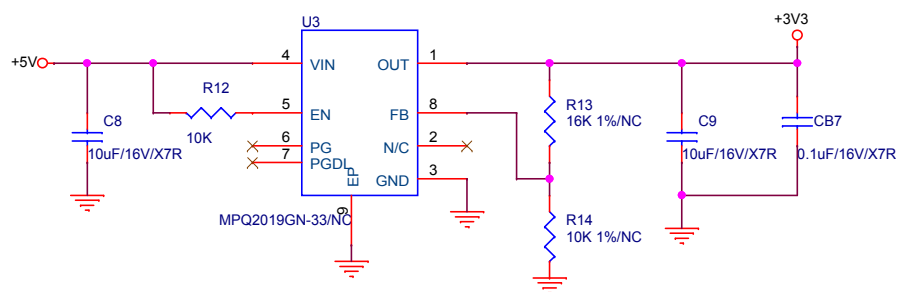
DC12V




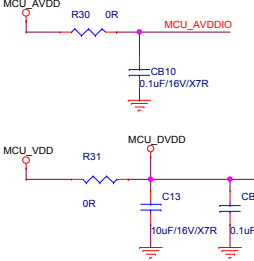
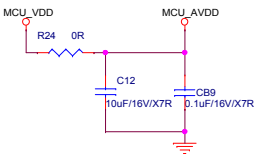
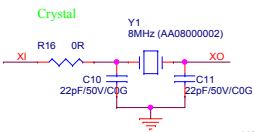
Freq: 410KHz, I_{max}: 2A



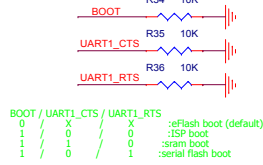
$$V_{out} = 0.792 * (1 + R1/R2)$$



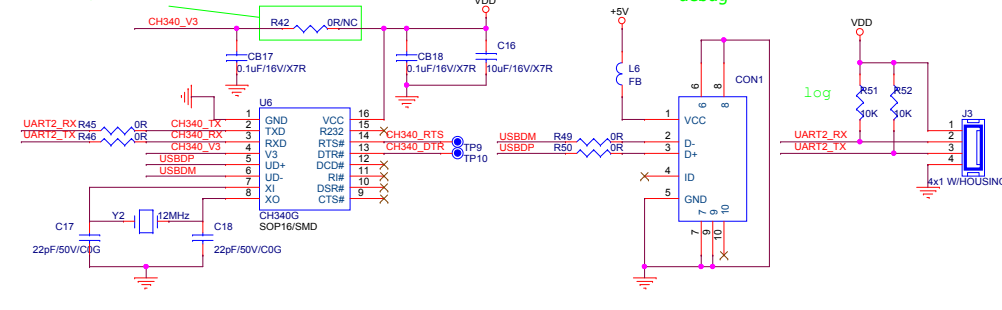
		AutoChips Inc. <i>AutoChips Confidential</i>	
Project Name: AC7811_LQFP80_MOTOR			
Size: Custom	Page Name: POWER	Designer: <i>Guibing.Luo</i>	Rev: 2.3
Date: Monday, August 26, 2019		Checker: <XXX>	
		Sheet 1 of 5	



Trapping



VDD=3.3V, connect this Jumper.
VDD=5V, not connect.



Mode select:

UART4_TX / UART4_RX / I2C2_SDA

0	0	0	0	BLDC square wave/HALL
1	1	1	1	BLDC square wave/EMF
0	1	0	0	FOC sine wave/HALL
1	0	0	1	FOC sine wave/EMF

